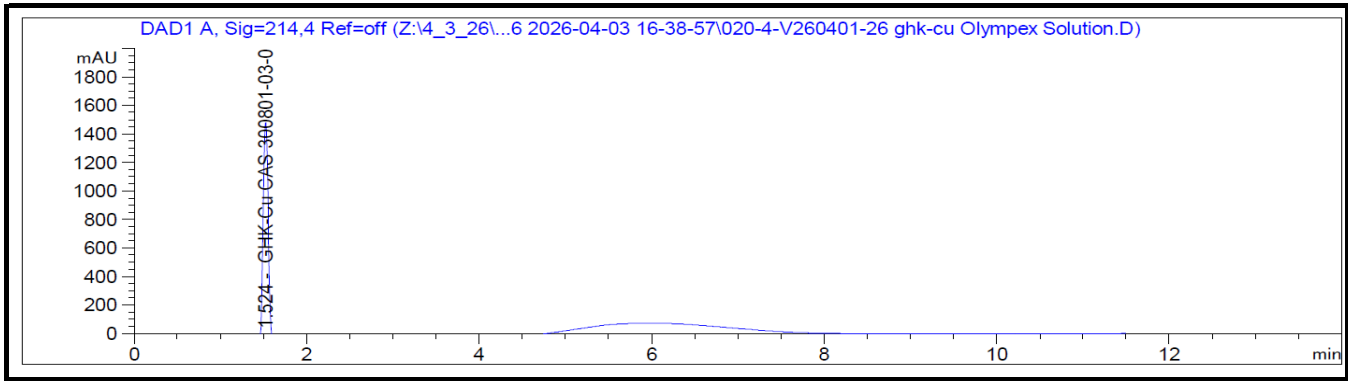


# Certificate of Analysis

GHK-Cu 50 mg

Report To:  
**Olympex Solutions**

Compound: GHK-Cu  
Amount: 50 mg  
Laboratory ID: V260401-26 001  
Lot Number: White Cap  
Date Reported: 4/13/2026



Analysis	Method	Result
Chromatographic Purity	HPLC-UV/VIS	>99.80% + 0.18%
Assay	HPLC-UV/VIS	51.74 mg




Report By: Dustin Newman, Laboratory Director on 4/13/2026



Approved By: Tori Johnson, Operations Manager on 4/13/2026

Please consult A2LA Certificate #6377.01.01 for a list of accredited tests. Samples were received in acceptable condition. The result(s) in this report relate only to the portion of the sample(s) tested. All analyses were performed consistent with the Vanguard Laboratory Quality Management System. Vanguard Laboratory and its staff did not observe or participate in the sample selection process, and cannot confirm the authenticity of the sample or its representativeness of the associated lot/batch.



Vanguard Laboratory  
2635 Parkmont Ln  
Olympia, Wa 98502  
360-967-7010

# Certificate of Analysis

GHK-Cu 50 mg

Report To:  
**Olympex Solutions**

Compound: GHK-Cu  
Amount: 50 mg  
Laboratory ID: V260401-26 001  
Lot Number: White Cap  
Date Reported: 4/13/2026

Analyte	Method	LOQ (ppm)	Result (ppm)
Arsenic (As)	ICP-MS	0.01	ND
Cadmium (Cd)	ICP-MS	0.01	ND
Lead (Pb)	ICP-MS	0.02	ND
Mercury (Hg)	ICP-MS	0.005	ND

Run ID: 260406

Analysis	Method	Result
Endotoxins	LAL	Pass - <5.00 EU/mg*

\*Pass/Fail criteria based on the USP/FDA threshold of 5 EU/kg (350 EU total for a 70 kg adult)

Report By: Dustin Newman, Laboratory Director on 4/13/2026

Approved By: Tori Johnson, Operations Manager on 4/13/2026

ND: Non-Detect

LOD: Limit of Quantification



Please consult A2LA Certificate #6377.01.01 for a list of accredited tests. Samples were received in acceptable condition. The result(s) in this report relate only to the portion of the sample(s) tested. All analyses were performed consistent with the Vanguard Laboratory Quality Management System. Vanguard Laboratory and its staff did not observe or participate in the sample selection process, and cannot confirm the authenticity of the sample or its representativeness of the associated lot/batch.